



FILTRI - COMPONENTI STRAINERS - PARTS



73.508.9



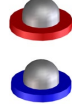
256.1901.2



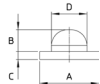
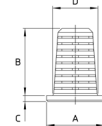
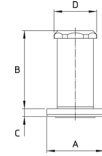
256.508.11




256.508.12



256.508.13
256.508.14

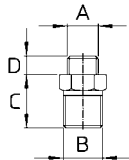


COME SI ORDINA / HOW TO ORDER

CODICE code	VERSIONE model	MESH	MATERIALI materials	A mm	B mm	C mm	D mm	
73.508.9	A fessura Slotted	25 mesh	PA66	14.5	17	1.5	11.3	25
256.1901.2	Antigoccia Check valve	40 mesh	PA - NBR Acciaio inox PA - Buna N - Stainless steel	14.7	20	2	10.8	25
256.508.11 blu-blue	Filtro Strainer	50 mesh	PA - Acciaio inox PA - Stainless steel	15	19.3	2	11.5	25
256.508.12 verde-green	Filtro Strainer	100 mesh	PA - Acciaio inox PA - Stainless steel	15	19.3	2	11.5	25
256.508.13 rosso-red	A cupola Cup strainer	32 mesh	PA - Acciaio inox PA - Stainless steel	15	5.5	2	10	25
256.508.14 blu-blue	A cupola Cup strainer	50 mesh	PA - Acciaio inox PA - Stainless steel	15	5.5	2	10	25



256.208.2



256.605.7



716.605.3



256.605.101



256.605.16

256.208.2

Pressione di esercizio max.: 40 bar

Peso: 26 g

Materiali: ottone nichelato

Max. operating pressure.: 40 bar / 600 psi

Weight: 26 g / 0.9 oz

Materials: nickel plated brass

256.605.7 - 716.605.3 - 256.605.101 - 256.605.16

Pressione di esercizio max.: 40 bar

Peso: 15 g



Materiali: ottone nichelato - ottone

Max. operating pressure.: 40 bar / 600 psi

Weight: 15 g / 0.5 oz

Materials: nickel plated brass - brass

COME SI ORDINA / HOW TO ORDER

CODICE code	A filettatura - thread	B filettatura - thread	C mm	D mm	
256.208.2	G1/4M. - 1/4"BSPM.	G3/8M. - 3/8"BSPM.	23	8	25
CODICE code	FILETTATURA thread	PER UGELLI for spray tips	Ø interno internal Ø	HEX mm	
256.605.7	G3/8F. - 3/8"BSPF.	Ø15	15.4	20	25
716.605.3		AD/AC ALBUZ® - Disc & Cores Teejet®	15.7	20	100
256.605.101		TX Teejet®	15.4	20	100
256.605.16		AD/AC ALBUZ®	15.85	20	100



UGELLI
TIPS