

**M96**

**POSIZIONAMENTO
E TENUTA SENZA COLLANTI**
**ADJUST NOZZLE POSITION
AND SEAL WITHOUT BONDING**



96.617.62
96.617.62 15



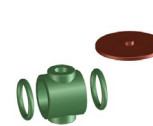
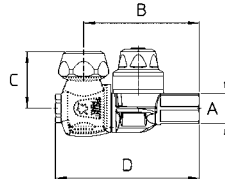
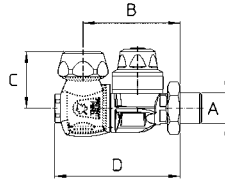
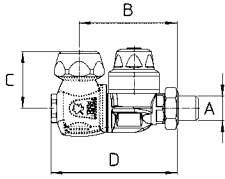
96.617.63
96.617.63 15



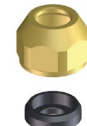
96.617.64
96.617.64 15



G1/4M.-1/4"BSPPM
Dado con O Ring
Nut with O Ring



Tenute in FPM
FKM seals



Kit ghiera AD/AC
AD/AC cap kit

Standard completi di ghiera. Ugello non compreso

Ghiere per ugelli: Kit Ø15, Kit Ø18, ALBUZ® ATR/TVI, ALBUZ® AD/AC

Versioni con attacco G1/4M.: standard dado G1/4F. con O Ring FPM

Versioni con attacco G3/8M. - G1/8F.: standard completi di dado

Pressione di esercizio max.: 40 bar

Peso: G1/4M. 230 g - G3/8M. 245 g - G1/4F. 230 g

Materiali: ottone - acciaio inox - FPM

Impiego: su atomizzatori. Ingombri ridotti. Due posizioni di spruzzo inclinate di 20°. Posizioni segnalate da uno scatto. Antigoccia resistente ed efficace in un ampio range di pressioni. Dimensioni di passaggio del fluido ampliate per ridurre le perdite di carico e per migliorare la durata. Resistenza chimica migliorata con l'impiego di tenute in FPM. Versioni con attacco G1/4M. forniti con dado e O Ring per il montaggio orientato del getto sui collettori senza utilizzare collanti.

Standard with cap. Spray tip not included

Available caps for: Ø18 kit, ATR/TVI ALBUZ®, AD/AC ALBUZ® spray tips

1/4"BSPPM. models: standard with 1/4"BSPPF. nut and FKM O Ring

3/8"BSPPM - 1/8"BSPPF. models: standard complete with nut

Max. operating pressure: 40 bar / 580 psi

Weight: 1/4"BSPPM. 230 g / 8 oz - 3/8"BSPPM. 245 g / 8.5 oz - 1/4"BSPPF. 230 g / 8 oz

Materials: brass - stainless steel - FKM

Use: on air blast sprayers. Two "OPEN" positions at ±20° from vertical. A click point out each position. Check valve assures efficient and long lasting operations at low and high pressures. Low pressure drops. Improved chemical resistance with FKM seals. 1/4"BSPPM. boom connection models with nut and O Ring to adjust nozzle position on booms without bonding.

COME SI ORDINA / HOW TO ORDER

CODICE code	GHIERA cap	PER UGELLI spare parts kit	A	B mm	C mm	D mm		KIT RICAMBIO spare parts kit
96.617.62 96.617.62 15 96.617.62 D	Ø18 Ø15 AD/AC	Ø18 kit ATR/TVI AD/AC	G1/4M. 1/4"BSPPM.	51	30	66	10	90.302.59
96.617.63 96.617.63 15 96.617.63 D	Ø18 Ø15 AD/AC	Ø18 kit ATR/TVI AD/AC	G3/8M.-G1/8F. 3/8"BSPPM.-1/8"BSPPF.	51	30	66	10	90.302.59
96.617.64 96.617.64 15 96.617.64 D	Ø18 Ø15 AD/AC	Ø18 kit ATR/TVI AD/AC	G1/4F. 1/4"BSPPF.	62	30	76	10	90.302.59



UGELLI
TIPS

PAGE 89